

**ecom-LSG**

**DETECTION OF FLAMABLE GASES**

- Three sensitivity levels adjustable
- Flexible, long, high-value swan-neck
- Acoustic signal on/off at choice
- Backlit bargraph
- Quick response time (< 2 seconds)

**ecom-LSG**

- Display range up to 0.5% vol. CH<sub>4</sub>
- 3 freely adjustable sensitivity levels
- Response time: < 2 seconds
- Flexible swan-neck with movable sensor head
- Display: Display approx. .8 x .28 in, backlit, diagram with 1-14 bars (10 bars = approx. 1000 ppm CH<sub>4</sub>)
- Sensor temperature compensation (23°F to 104°)
- Acoustic signal: switch on/off or via
- headphone jack (3.5 jack plug)
- Power supply: 2 x AAA batteries (included)
- Replacement sensor for fast exchange (included)
- Test equipment bottle (included)
- Protection sleeve (included)

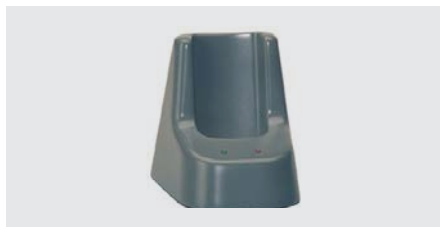
**Dimensions housing (W x H x D)** approx. 6 x 1.4 x .9 in.

**Swan-neck length** approx. 14 in

**Weight** approx. .5 lb



**ACCESSORIES**



**Battery charger**

Battery charging station for ecom-LSG - incl. 2 batteries and power supply.



**Replacement sensor**

Pre-calibrated and immediately usable.



**Transport case**

Made of plastic - with foam insert including recesses for ecom-LSG and all accessories.